

Name: \_\_\_\_\_ Group: \_\_\_\_\_

**TOPICS:**

- CELL (Prokaryotic and Eukaryotic cell)
- Animal and plant cell
- Organelles 'function
- Level of organization of living things
- What is matter ?
- Properties of matter (Mass – Volume – Temperature)

1. Complete the following chart with YES or NOT:

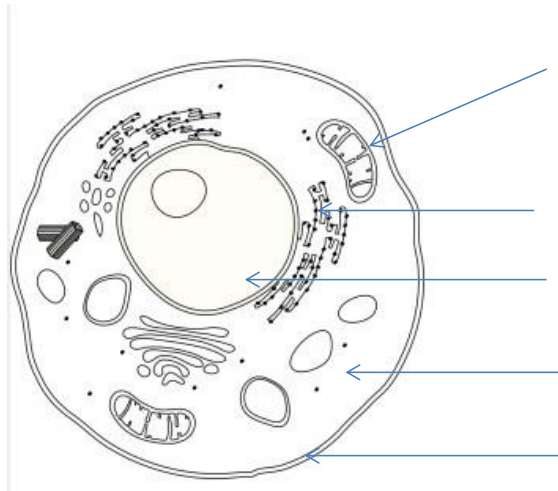
STRUCTURE	PLANT CELL	ANIMAL CELL
Cell membrane		
Cell wall		
Mitochondria		
Chloroplast		
Nucleus		
Vacuole		
Lysosome		

2. Complete the following table by writing the name of the cell organelle:

**Cell organelles:** Ribosomes – vacuole – nucleus – chloroplast – cytoplasm.

Structure / function	Organelle
controls cell activities	
store food, water, and waste	
uses energy from sun to make food for the plant	
produces proteins	
supports and protects cell organelles	

3. Look at the picture and answer the following questions



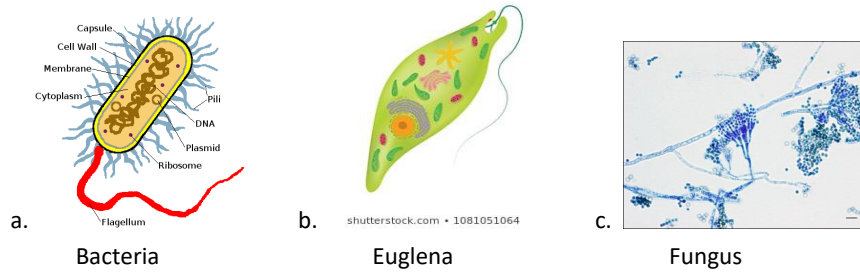
a. is it an animal or plant cell? \_\_\_\_\_

b. points out the following structures of cell:

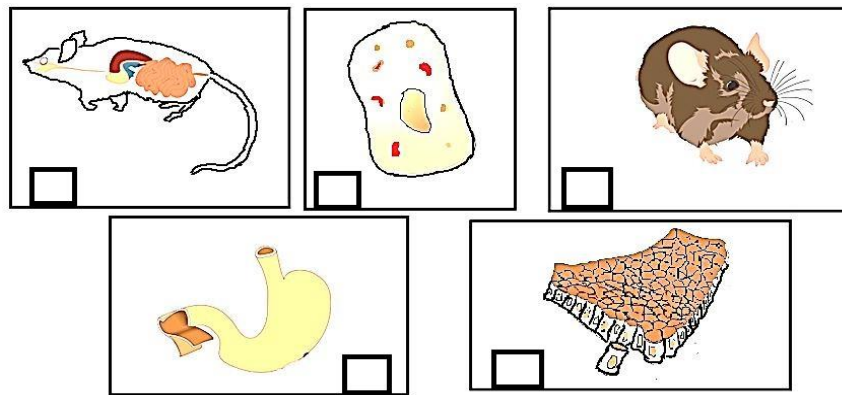
- Nucleus      Mitochondria      Cytoplasm      Cell membrane  
 Endoplasmic reticulum

Name: \_\_\_\_\_ Group: \_\_\_\_\_

4. Choose the prokaryotic organism



5. The pictures below show the different levels of organization of a mouse. Observe the images and write the number of the chart that correspond



Fuente: commons.wikimedia.org

Level of organization	Example
Cell	2
Tissue	5
Organ	4
System	1
Organism	3

**Multiple choices**

6. This the organelle that produce the energy for the cell
- Ribosome
  - Nucleus
  - Mitochondria
  - Golgi apparatus
7. A group of cells formed a / an
- System
  - Tissue
  - Organism
  - Organ



Name: \_\_\_\_\_ Group: \_\_\_\_\_

8. This organelle store food and water
- a. Mitochondria
  - b. Ribosome
  - c. Nucleus
  - d. Chloroplast

**TRUE OR FALSE**

9. We can used a thermometer to measure the volume of the objects \_\_\_\_\_
10. Mass is the amount of matter that an object has \_\_\_\_\_

**Follow these links to know more about topics:**

<https://www.youtube.com/watch?v=8vo59AKzU4Q>  
<https://www.youtube.com/watch?v=RQ-SMCmWB1s>  
<https://www.youtube.com/watch?v=Hbpe3FhsQp8>  
<https://www.youtube.com/watch?v=zoEEZmVPITs>  
<https://www.youtube.com/watch?v=Y8-T8RouhPA>

**To play games:**

<https://www.legendsoflearning.com/learning-objectives/parts-of-the-cell/>  
<http://unsitioparalasciencias.overblog.com/2015/10/cell-games.html>  
<https://www.cellsalive.com/puzzles/index.htm>

**Nota:** Para seguir cada uno de los vínculos deben presionar la tecla Ctrl + clic